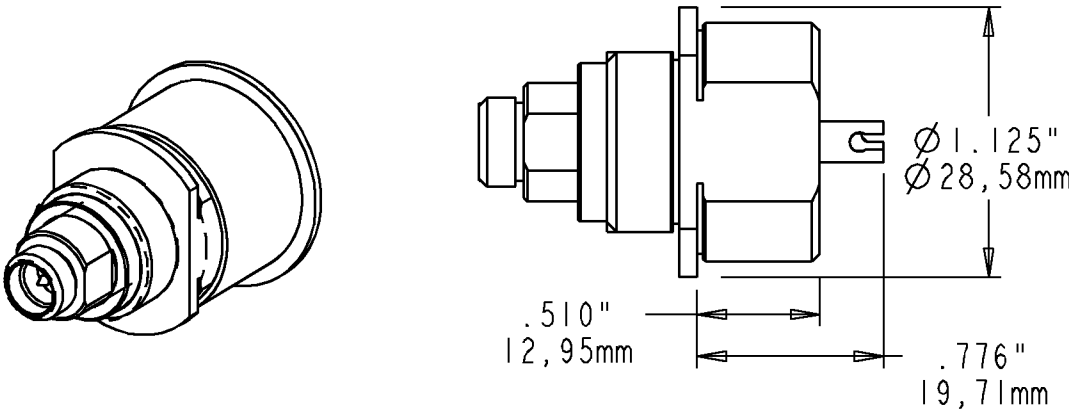
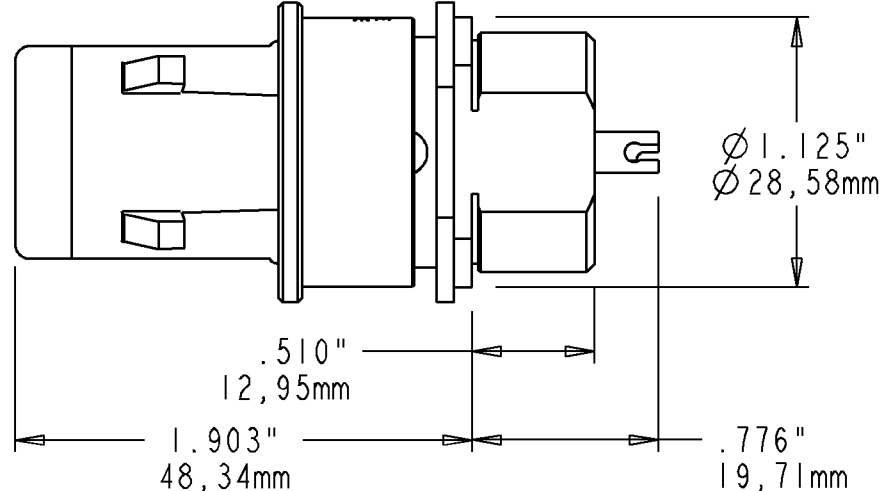
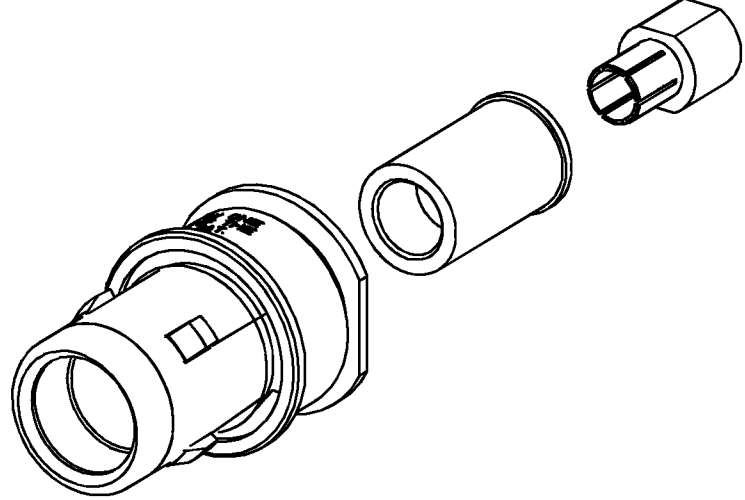
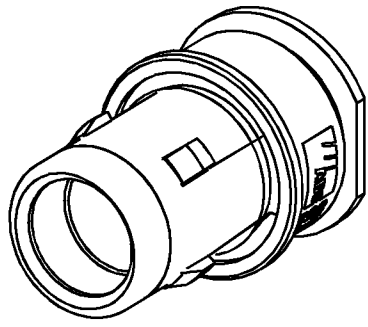
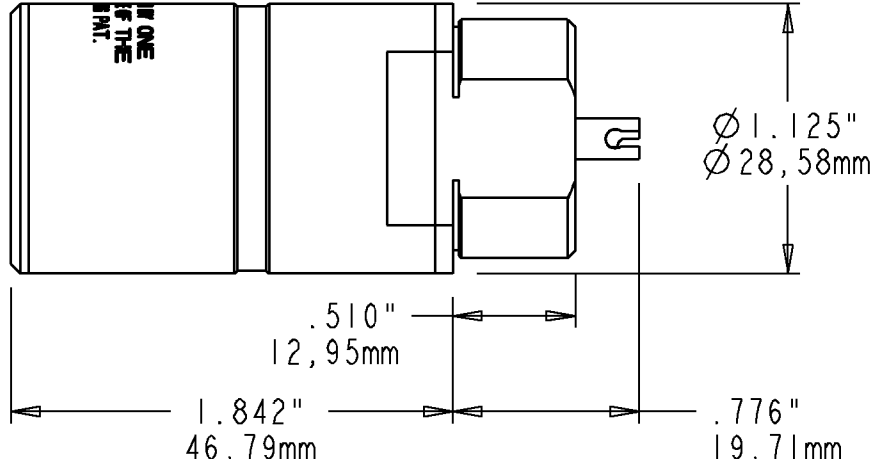
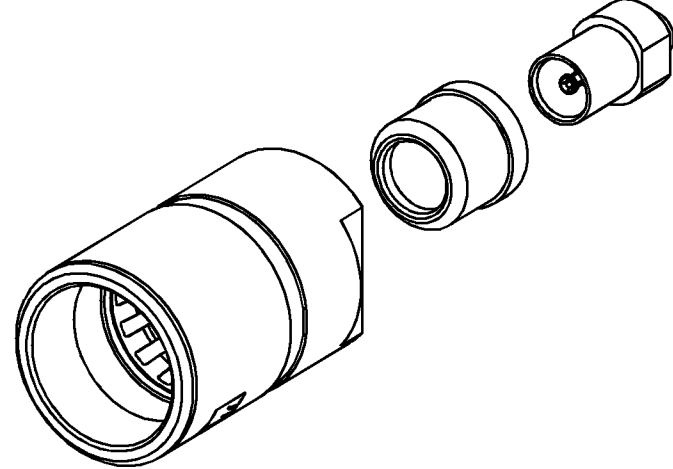
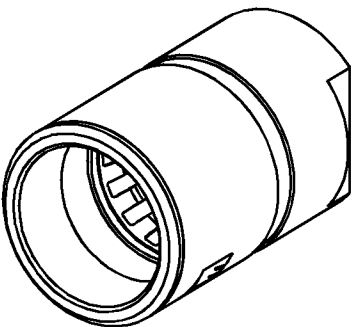


REV	MCO	DWN	DATE
E	20181121	DAT	07-MAR-06
F	20210613	JSY	07-FEB-07

<b>UNIVERSAL REAR UNIT</b>	
<b>ADC CAT. #</b>	<b>TRK-RU-BH</b>

TYPE	GENDER	TOP LEVEL ASSEMBLY	GENDER CHANGER KIT	FRONT SHELL REPAIR KIT
<b>US</b>	<b>MALE (PLUG)</b>			
	<b>ADC CAT. #</b>	<b>TCP-BH</b>	<b>TRK-GCM-BH</b>	<b>TRK-MOS-BH</b>
	<b>FEMALE (JACK)</b>			
	<b>ADC CAT. #</b>	<b>TCJ-BH</b>	<b>TRK-GCF-BH</b>	<b>TRK-FOS-BH</b>



INFORMATION ON THIS DOCUMENT IS PROPRIETARY TO ADC AND SHALL NOT BE USED, COPIED, REPRODUCED OR DISCLOSED IN WHOLE OR IN PART WITHOUT WRITTEN CONSENT OF ADC.  
 ALL DIMS AND TOLERANCES ARE INCHES UNLESS OTHERWISE SPECIFIED  
 .XX:±.02  
 .XXX:±.010  
 ANGULAR:±2°

TITLE: INSTALLATION DRAWING  
 PROAX TRIAX CONNECTORS  
 BULKHEAD / CAMERA-MOUNT  
 DRAWING NUMBER: 1272638  
 ENGR: A. KHEMAKHEM  
 DWN: D. SAND

DO NOT SCALE DRAWING  
 SHT. 1 OF 5

  **DIMENSIONS IN INCHES  
 THIRD ANGLE PROJECTION**

A

B

C

D

TYPE	GENDER	TOP LEVEL ASSEMBLY	GENDER CHANGER KIT	FRONT SHELL REPAIR KIT
B-TYPE BBC	MALE (PLUG)			
	ADC CAT #	<b>BTCP-BH-50 (OR 75)</b>	<b>BTRK-GCM-BH-50 (OR 75)</b>	<b>BTRK-MOS-BH</b>
	FEMALE (JACK)			
ADC CAT #	<b>BTCJ-BH-50 (OR 75)</b>	<b>BTRK-GCF-BH-50 (OR 75)</b>	<b>BTRK-FOS-BH</b>	
N-TYPE REVERSE BBC	MALE (PLUG)			
	ADC CAT #	<b>NTCP-BH-75 (OR 50)</b>	<b>NTRK-GCM-BH-75 (OR 50)</b>	<b>NTRK-MOS-BH</b>
	FEMALE (JACK)			
ADC CAT #	<b>NTCJ-BH-75 (OR 50)</b>	<b>NTRK-GCF-BH-75 (OR 50)</b>	<b>NTRK-FOS-BH</b>	



INFORMATION ON THIS DOCUMENT IS PROPRIETARY TO ADC AND SHALL NOT BE USED, COPIED, REPRODUCED OR DISCLOSED IN WHOLE OR IN PART WITHOUT WRITTEN CONSENT OF ADC.

ALL DIMS AND TOLERANCES .XX:±.02 ARE INCHES UNLESS OTHERWISE SPECIFIED ANGULAR:±2°

TITLE INSTALLATION DRAWING  
PROAX TRIAX CONNECTORS  
BULKHEAD / CAMERA-MOUNT

DRAWING NUMBER 1272638

DO NOT SCALE DRAWING

ENGR: A. KHEMAKHEM  
DWN: D. SAND

SHT. 2 OF 5

DIMENSIONS IN INCHES  
THIRD ANGLE PROJECTION

A

B

C

TYPE	GENDER	TOP LEVEL ASSEMBLY	GENDER CHANGER KIT	FRONT SHELL REPAIR KIT
L-TYPE FRENCH	MALE (PLUG)	<p>L-TYPE DESIGNATION</p>		
	ADC CAT #	<b>LTCP-BH</b>	<b>LTRK-GCM-BH</b>	<b>LTRK-MOS-BH</b>
	FEMALE (JACK)			
ADC CAT #	<b>LTCJ-BH</b>	<b>LTRK-GCF-BH</b>	<b>LTRK-FOS-BH</b>	
D-TYPE GERMAN	MALE (PLUG)			
	ADC CAT #	<b>DTCP-BH</b>	<b>DTRK-GCM-BH</b>	<b>DTRK-MOS-BH</b>
	FEMALE (JACK)			
ADC CAT #	<b>DTCJ-BH</b>	<b>DTRK-GCF-BH</b>	<b>DTRK-FOS-BH</b>	



INFORMATION ON THIS DOCUMENT IS PROPRIETARY TO ADC AND SHALL NOT BE USED, COPIED, REPRODUCED OR DISCLOSED IN WHOLE OR IN PART WITHOUT WRITTEN CONSENT OF ADC.

ALL DIMS AND TOLERANCES .XX:±.02 ARE INCHES UNLESS OTHERWISE SPECIFIED ANGULAR:±2°

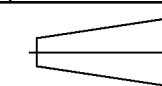
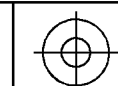
TITLE INSTALLATION DRAWING  
PROAX TRIAX CONNECTORS  
BULKHEAD / CAMERA-MOUNT

DRAWING NUMBER 1272638

DO NOT SCALE DRAWING

ENGR: A. KHEMAKHEM  
DWN: D. SAND

SHT. 3 OF 5



DIMENSIONS IN INCHES  
THIRD ANGLE PROJECTION

TYPE	GENDER	TOP LEVEL ASSEMBLY	GENDER CHANGER KIT	FRONT SHELL REPAIR KIT
J-TYPE JAPANESE	FEMALE (PLUG)			
	ADC CAT #	JTCP-BH	JTRK-GCF-BH	JTRK-FOS-BH
J-TYPE JAPANESE	MALE (JACK)			
	ADC CAT #	JTCJ-BH	JTRK-GCM-BH	JTRK-MOS-BH
G-TYPE GLOBAL	FEMALE (JACK)			
	ADC CAT #	GTCJ-BH	GTRK-GCF-BH	GTRK-FOS-BH
G-TYPE GLOBAL	MALE (PLUG)			
	ADC CAT #	GTCP-BH	GTRK-GCM-BH	GTRK-MOS-BH



INFORMATION ON THIS DOCUMENT IS PROPRIETARY TO ADC AND SHALL NOT BE USED, COPIED, REPRODUCED OR DISCLOSED IN WHOLE OR IN PART WITHOUT WRITTEN CONSENT OF ADC.

ALL DIMS AND TOLERANCES .XX:±.02 ARE INCHES UNLESS OTHERWISE SPECIFIED ANGULAR:±2°

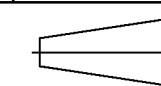
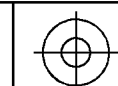
TITLE INSTALLATION DRAWING  
PROAX TRIAX CONNECTORS  
BULKHEAD / CAMERA-MOUNT

DRAWING NUMBER 1272638

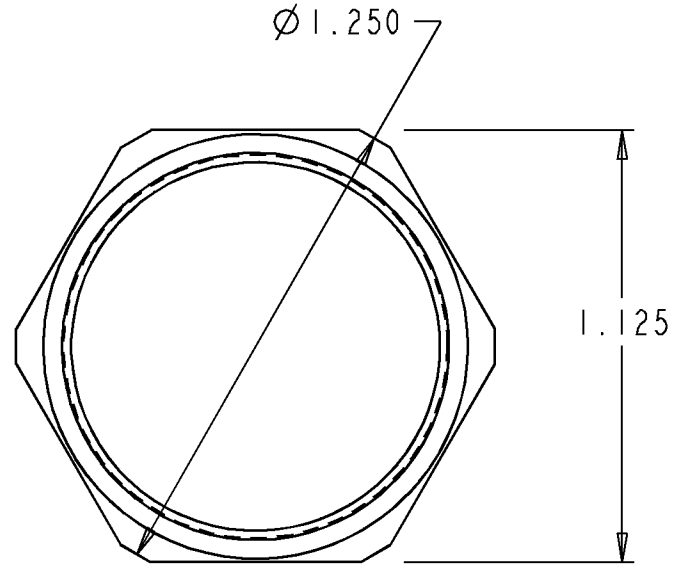
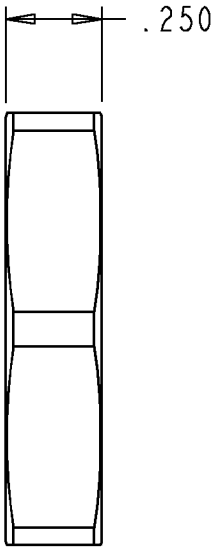
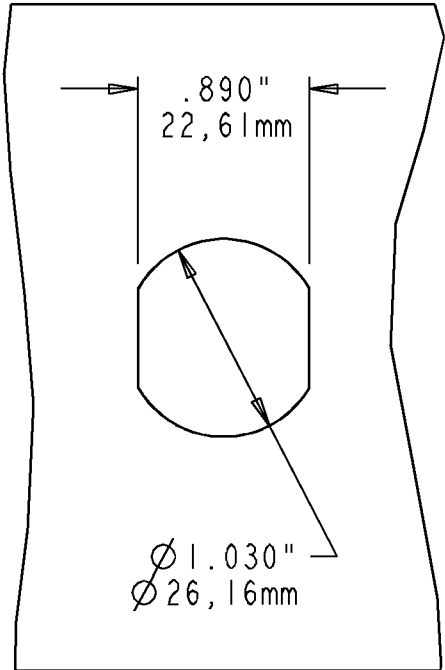
DO NOT SCALE DRAWING

ENGR: A. KHEMAKHEM  
DWN: D. SAND

SHT. 4 OF 5



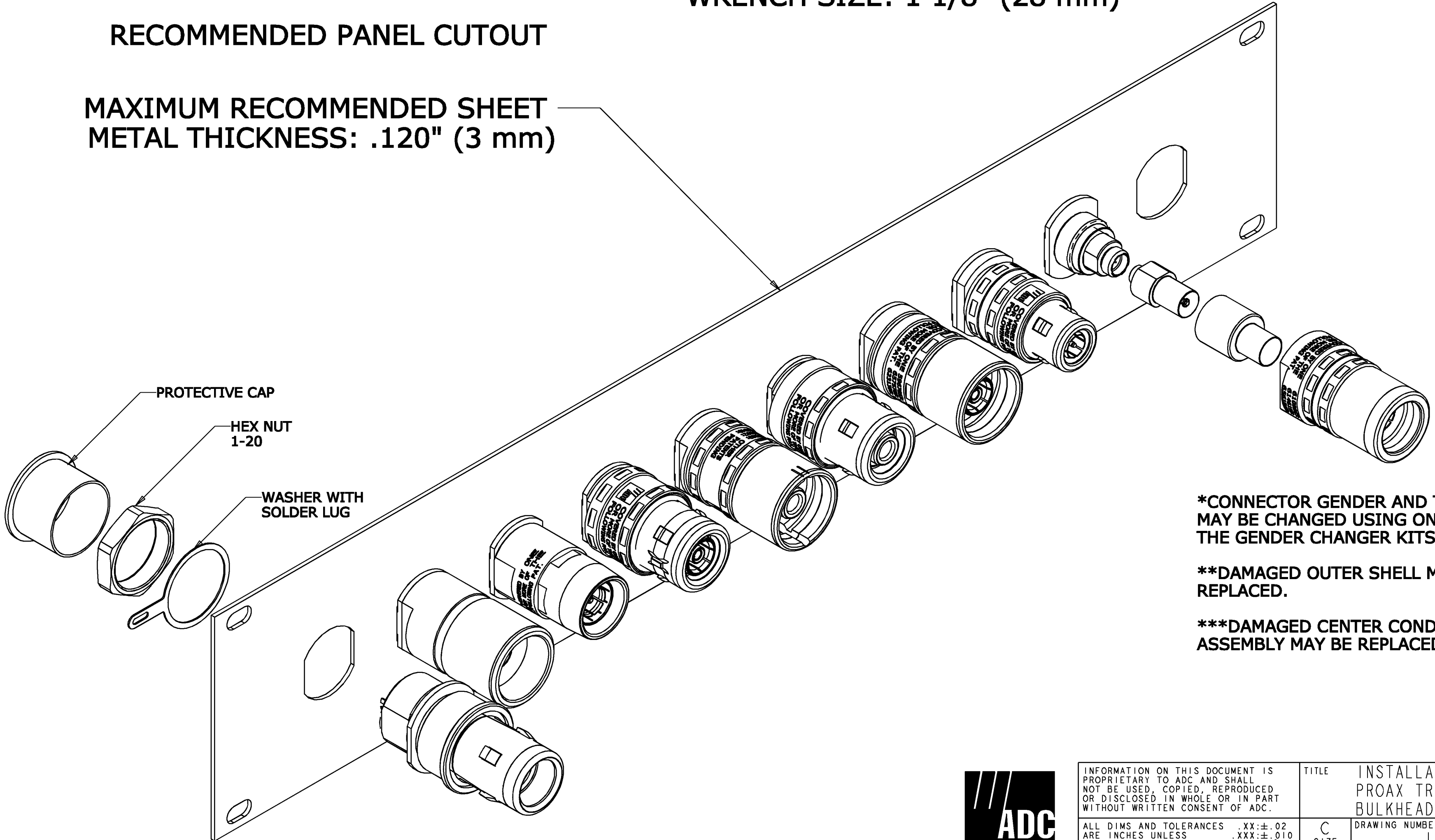
DIMENSIONS IN INCHES  
THIRD ANGLE PROJECTION



**WRENCH SIZE: 1 1/8" (28 mm)**

**RECOMMENDED PANEL CUTOUT**

**MAXIMUM RECOMMENDED SHEET METAL THICKNESS: .120" (3 mm)**



PROTECTIVE CAP

HEX NUT  
1-20

WASHER WITH  
SOLDER LUG

**\*CONNECTOR GENDER AND TYPE MAY BE CHANGED USING ONE OF THE GENDER CHANGER KITS.**

**\*\*DAMAGED OUTER SHELL MAY BE REPLACED.**

**\*\*\*DAMAGED CENTER CONDUCTOR ASSEMBLY MAY BE REPLACED.**



INFORMATION ON THIS DOCUMENT IS PROPRIETARY TO ADC AND SHALL NOT BE USED, COPIED, REPRODUCED OR DISCLOSED IN WHOLE OR IN PART WITHOUT WRITTEN CONSENT OF ADC.		TITLE INSTALLATION DRAWING PROAX TRIAX CONNECTORS BULKHEAD / CAMERA-MOUNT	
ALL DIMS AND TOLERANCES ARE INCHES UNLESS OTHERWISE SPECIFIED	.XX:±.02 .XXX:±.010 ANGULAR:±2°	C SIZE	DRAWING NUMBER 1272638
DO NOT SCALE DRAWING	ENGR: A. KHEMAKHEM DWN: D. SAND	SHT. 5 OF 5	

**DIMENSIONS IN INCHES  
THIRD ANGLE PROJECTION**