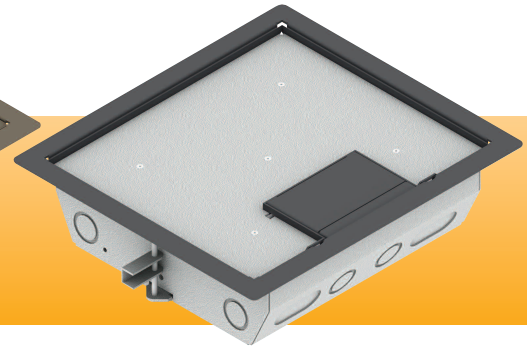
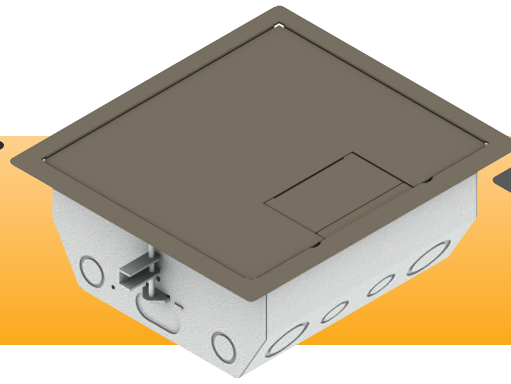
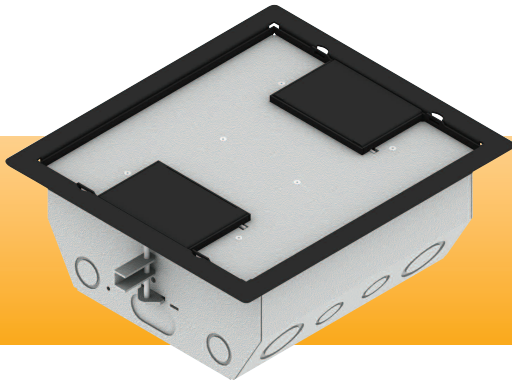


RFL4.5-Q2G-BLKDD

RFL4.5-Q1G-SLCLY

RFL3-Q1G-GRY



## DESCRIPTION

The RFL Series Q Raised Access Floor Boxes are designed for flexibility, durability and style. These rugged units safely handle the rigors of high traffic floor environments. There are three cover styles to choose from: Single door carpet trim cover, dual door carpet trim cover or a single door solid cover.

All cover styles are available in three colors with custom colors available on request (Consult factory).

All Series Q models feature all steel construction for durability and are designed to install in a 9 $\frac{3}{4}$ " x 11" opening in the floor. They are available in either 4 $\frac{1}{16}$ " or 3 $\frac{1}{4}$ " box depths.

The RFL4.5-Q2G is a 4 $\frac{1}{16}$ " deep floor box with four standard double gang openings, two on each side of the box. Either or both of the compartments may be used for power or data.

The RFL4.5-Q1G is a 4 $\frac{1}{16}$ " deep floor box with four standard single gang openings, two on each side of the box for power or data, and two single gang openings on the bottom for data. The data plate insert is removable for added room in the box.

The RFL3-Q1G is a 3 $\frac{1}{4}$ " deep floor box with four standard single gang openings, two on each side of the box. Either or both of the compartments may be used for power or data.

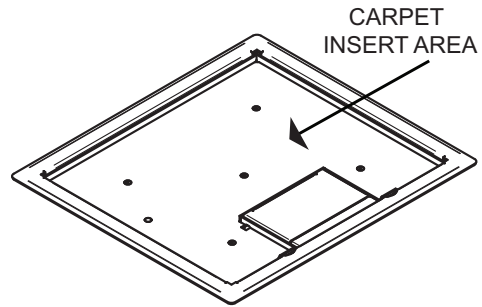
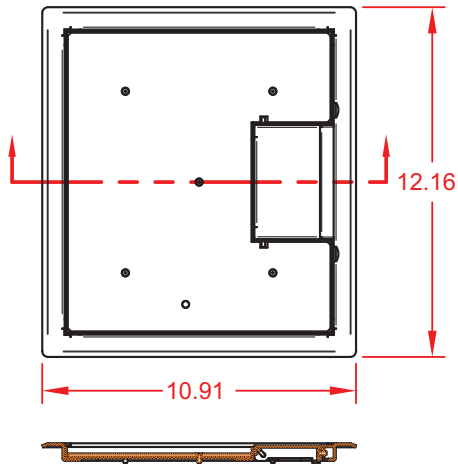
## FEATURES

The RFL Series Q features:

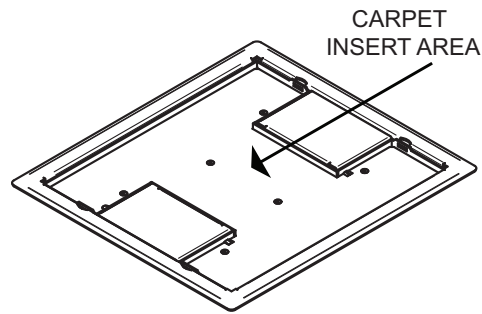
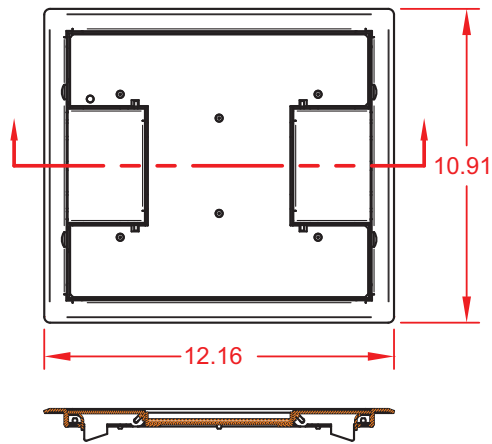
- Patented epoxy wrinkle powder finish, available in 3 colors
- Choice of three cover styles; solid, single-door and dual-door
- 14-gauge steel construction
- Cover thickness  $\frac{3}{16}$ "
- Oversize cable door(s)
- Standard electrical plate openings on all models
- Superior mounting clamp design to handle a wide variety of floor thicknesses
- Listed by UL to meet US and Canadian safety standards
- Large multi-compartment boxes for power, audio, video, data and more!
- Multiple knockouts in a variety of sizes
- Choice of two box depths
- Choice of three gang layout styles

Architectural Note: The carpet rim and cable exit door are available standard in gray, black, or clay. Custom finishes are also available as an option. Optional 1" x 2" KO gromet FSR part #13342.

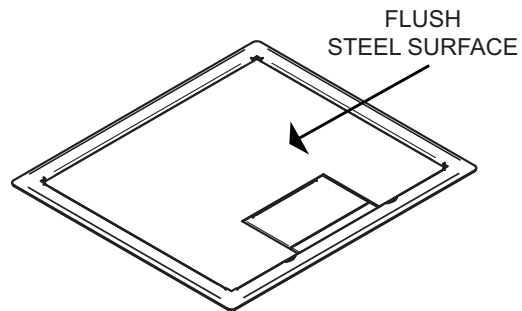
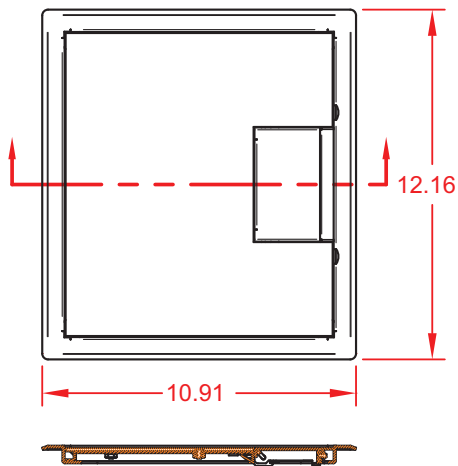
# RFL-Q Cover Dimensions



**SINGLE DOOR**



**DUAL DOOR**



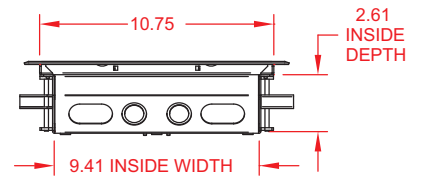
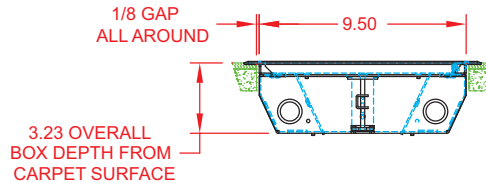
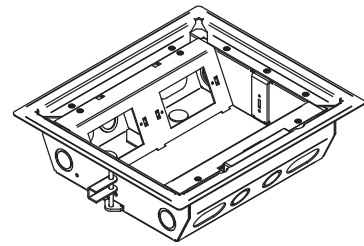
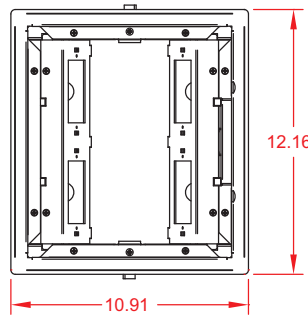
**SOLID COVER**

# RFL-Q General Dimensions

## RFL3-Q1G

- Box Volume (Less Panels) 210 cu in
- Device Compartment Volume 46 cu in. (without divider)
- Brackets Included
  - Two, with 2 single gang openings on each side and 1 divider
- Number and Size of Knockouts
  - 4 - 1/2" on the bottom
  - 8 - 1/2" - 3/4" on the sides
  - 4 - 1" X 2" oval on the sides
- Cover Material
  - 16/14 ga Steel under 11 ga Steel Support
- Support Flange Material
  - 14 ga galvanized Steel
- Body Material
  - 14 ga galvanized Steel
- Max. No. of Device Panels
  - 2 dual single gang (Provided)

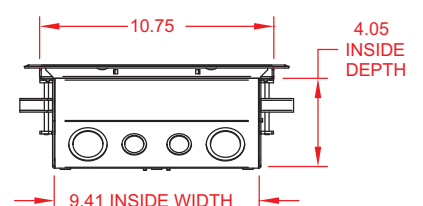
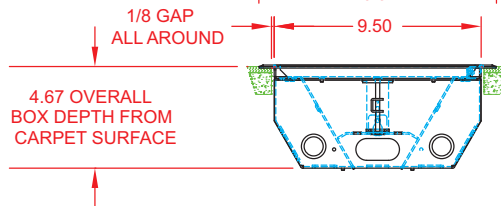
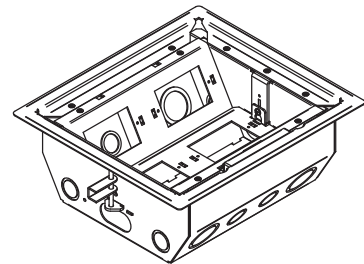
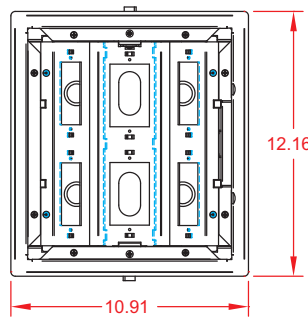
9.75 x 11.00  
FLOOR HOLE SIZE



## RFL4.5-Q1G

- Box Volume (Less Panels) 325 cu in
- Device Compartment Volume 75 cu in. (without divider)
- Brackets Included
  - Two, with 2 single gang openings on each side for power or data and one with 2 single gang openings for data on bottom
- Number and Size of Knockouts
  - 4 - 1/2" on the bottom
  - 8 - 1/2" - 3/4" on the sides
  - 4 - 1" - 1 1/4" on the sides
  - 4 - 1" X 2" oval on the sides
- Cover Material
  - 16/14 ga Steel under 11 ga Steel Support
- Support Flange Material
  - 14 ga galvanized Steel
- Body Material
  - 14 ga galvanized Steel
- Max. No. of Device Panels
  - 3 single gang (Provided)

9.75 x 11.00  
FLOOR HOLE SIZE



## RFL4.5-Q2G

- Box Volume (Less Panels) 325 cu in
- Device Compartment Volume 75 cu in. (without divider)
- Brackets Included
  - Two, with 2 double gang openings on each side and 1 divider
- Number and Size of Knockouts
  - 4 - 1/2" on the bottom
  - 8 - 1/2" - 3/4" on the sides
  - 4 - 1" - 1 1/4" on the sides
  - 4 - 1" X 2" oval on the sides
- Cover Material
  - 16/14 ga Steel under 11 ga Steel Support
- Support Flange Material
  - 14 ga galvanized Steel
- Body Material
  - 14 ga galvanized Steel
- Max. No. of Device Panels
  - 2 double gang (Provided)

9.75 x 11.00  
FLOOR HOLE SIZE

